



SMB Kenzai Co.,Ltd.



SMB Kenzai Co.,Ltd.

SUMITOMO FUDOSAN TORANOMON TOWER 2-2-1
Toranomom, Minato-ku, Tokyo 105-0001, Japan



CORPORATE GUIDE

Towards a world overflowing with comfort. For people, for the Earth.



Corporate Brand

"COCOTOWA" is a SMBKZ corporate brand that was developed based on values we hold dear. We sell products and services that agree with our philosophy under the "COCOTOWA" brand name.



"COCOTOWA" means long lasting comfort. As a wish to contribute to the long lasting comfort of each person's life as well as to create a comfortable future, SMBKZ is offering the "COCOTOWA" brand that combines the wisdom and passion of each employee. Through the "COCOTOWA" brand, we are committed to supporting the lives of everyone and the future of the Earth.

Compliance

Pursuing sound business activities as a member of society, in line with our code of conduct

Having set out basic guidelines on compliance and established a Compliance Committee chaired by the company's Chief Compliance Officer (CCO), SMBKZ makes every effort to reinforce and promote compliance, including familiarizing executives and employees with individual guidelines, and organizing awareness and educational activities.

Basic Guidelines

Put compliance first in everything that you do.

Always act in accordance with the law and maintain a strong sense of ethics in all situations, as a member of society.

Sustainability

Comfortable living in the next generation. We continue our efforts to realize a sustainable society.

Our management philosophy includes our basic stance on important sustainability-related themes, such as respect for human rights, environmental conservation, social contributions, and building trust with stakeholders.

SMBKZ will continue to give sufficient consideration to conservation of the global environment, while complying with all relevant laws and regulations. At the same time, we will continue contributing to the realization of a sustainable society and the finding of solutions to global-scale issues through our sound and sincere business activities.



Strengths of SMBKZ

Leveraging the collective strengths of Mitsui & Co., Ltd., Sumitomo Corporation, and Marubeni Corporation

With the backbone of the Mitsui, Sumitomo, and Marubeni Group, SMBKZ is developing its business in a dynamic way by leveraging its stable management base and global network that extends around the world. SMBKZ contributes to society by collaborating with the three general trading firms to develop forest resources and large-scale projects in its business domain.



Wooden Products

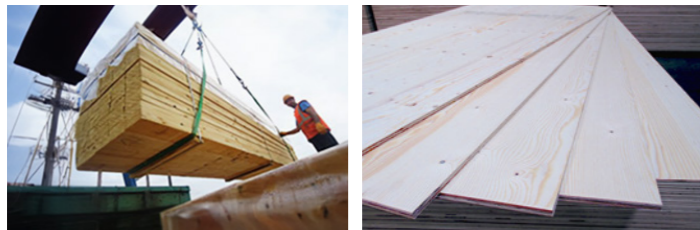
Leveraging our domestic and international networks, SMBKZ provides a stable supply of high quality wooden products.



In line with the changes of the times, the requirements for buildings have become increasingly diversified, in terms of such aspects as functionality, durability, and environmental performance. To promptly respond to such needs, SMBKZ procures and stably provides reliable wooden products, including plywood, fiberboard, lumber, laminated lumber, and logs, in Japan and overseas.

Strengths of SMBKZ wooden products

1. Discovering and securing reliable wooden materials around the world
2. Assigning professionals for each product
3. Actively handling environmentally friendly products



Housing Materials

SMBKZ handles a comprehensive range of building materials for housing and responds with the best solutions to a wide range of living space needs.



SMBKZ is an industry-leading building material trading company that deals in a wide range of essential products and materials for house building and is heavily involved in distribution too.

Strengths of SMBKZ housing materials

1. An organizational structure that enables nationwide initiatives in line with customers' needs
2. A wide range of products and services and diverse sales channels
3. Providing construction and solutions to cover a wider area to meet diversifying demands



Construction Engineering & Materials

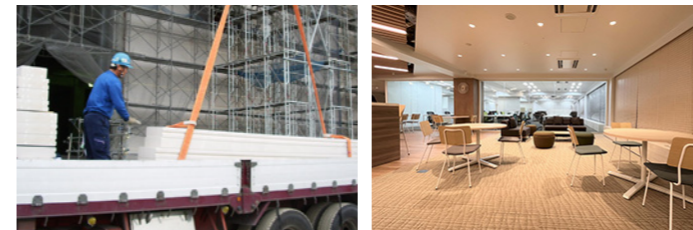
SMBKZ supplies construction materials and equipment for buildings and condominiums, contributing to creating towns and comfortable spaces.



SMBKZ makes the most of the networks at the disposal of Mitsui & Co., Ltd. and Sumitomo Corporation and Marubeni Corporation to provide exterior and interior materials, housing equipment and other items with an emphasis on safety and the environment. It also focuses on environmental products such as solar power systems.

Strengths of SMBKZ construction materials

1. A diverse network in partnership with material manufacturers
2. A large team of specialists in construction equipment and materials
3. Superior information gathering capabilities, to uncover and develop new products in line with people's needs



Wooden Structure

As a pioneer of wooden bi-directional rigid-framed structures, SMBKZ supports the creation of spaces overflowing with the warmth of wood.



Drawing on knowledge, experience and a wealth of expertise, underpinned by a proven track record, SMBKZ provides total support for wooden structures, from a range of solutions through to structural calculations, material procurement and construction management.

Strengths of SMBKZ wooden building structures

1. Providing total support via experts specializing in construction
2. Demonstrating on comprehensive capabilities, built on a proven track record, trust and outstanding information gathering capabilities
3. Summit HR Construction System for wooden bi-directional rigid-framed structures



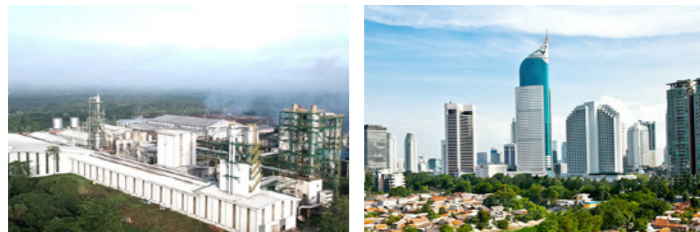
Overseas Business

SMBKZ has established overseas offices and is operating various businesses internationally, including exports of Japanese building materials and trilateral transaction.



SMBKZ meets diversified needs by leveraging the global network of Mitsui Co. Ltd., Sumitomo Corporation and Marubeni Corporation, as well as its marketing capabilities based on the experience and knowledge cultivated locally. SMBKZ is developing high value-added businesses and products, especially in the fast-growing Asian market, by leveraging its strong connections with manufacturers in Japan and overseas.

1. Tri-nation trade based on trust
2. Introducing high quality Japanese building materials to overseas
3. Proactive sales activities in overseas markets
4. Business participation in overseas manufacturer
5. Providing added values by outsourcing construction drawings and estimation outsourcing business



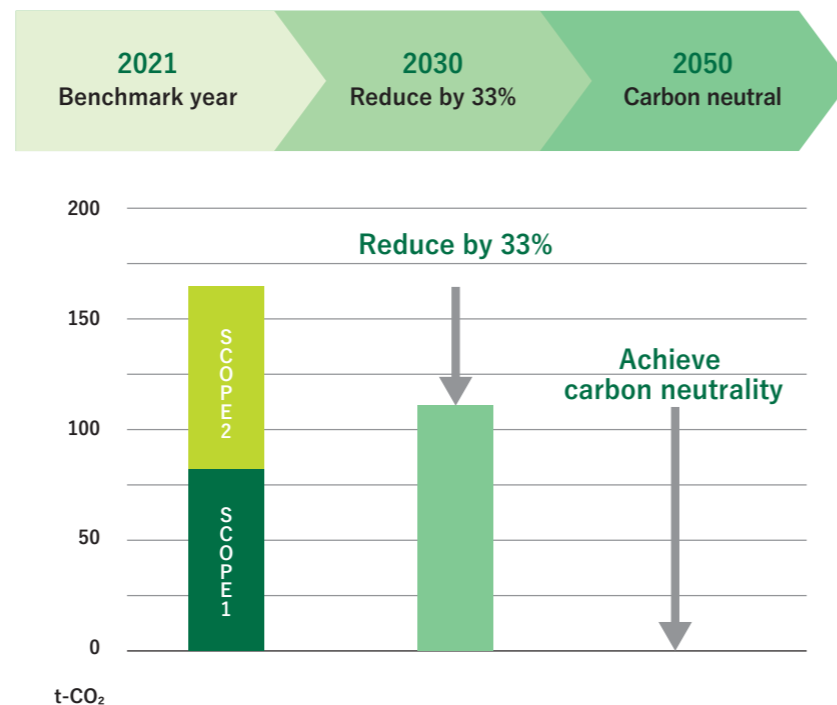
Carbon Neutrality Declaration

SMBKZ declares that it will achieve carbon neutrality by 2050.

The company is committed to reducing CO₂ emissions from the use of offices and company vehicles by 33% compared to FY2021 level by 2030, and virtually to zero by 2050 through measures such as switching to electricity derived from renewable energy sources and promoting the use of HVs and EVs, in addition to through streamlining and improving operational efficiency.



Plan for reduction of CO₂ emissions



Corporate Profile

◆Company name
SMB Kenzai Co., Ltd.

◆Address
SUMITOMO FUDOSAN TORANOMON TOWER 2-2-1,
Toranomon, Minato-ku, Tokyo 105-0001, Japan

◆Capital
¥3.035 billion
Sumitomo Corporation (36.25%) Mitsui & Co., Ltd. (36.25%) Marubeni Corporation (27.5%)

◆Established
September 8, 1966
(Business integration of Sumisho & Mitsuibussan Kenzai Co., Ltd. and Marubeni Building Materials Co., Ltd. as of January 1, 2017)

◆Number of Employees
431 (as of April 1, 2024)

◆Representative
Representative Director, President Tomoharu Kurokawa

◆Turnover
¥340.5 billion (year ended March 2024)

◆Major Banks
Sumitomo Mitsui Banking Corporation
MUFG Bank, Ltd.
Mizuho Bank, Ltd.
Sumitomo Mitsui Trust Bank, Limited
The Shizuoka Bank, Ltd.
The Shiga Bank, LTD.

◆Business activities and products
Purchasing, selling and developing plywood, wood products, wooden building materials, housing apparatus, ceramic, metal and resin building materials

Providing a wide range of construction contracting services (interior fittings and design, joinery, housing equipment, exterior fittings and design, wooden structure, construction and renovation of offices, retail premises, etc.)

- ◆Business objectives
1. Sales, imports/exports, hiring, leasing and installation of the following items
 - (1) Materials for construction and civil engineering work, wooden and ceramic raw materials, and other raw materials
 - (2) Synthetic resin products, wooden and metal furniture, interior goods, everyday goods and packaging materials
 - (3) Industrial chemicals (including toxic and poisonous substances), pharmaceuticals and other chemicals
 - (4) Housing apparatus, light fittings, electric/electronic equipment, software, construction machinery
 - (5) Machinery apparatus and tools for wood, plywood, lumber, and woodwork, and related parts
 2. Contract services for construction and civil engineering work, machinery installation, as well as related planning, design and management services
 3. Real estate sales, letting and agency services
 4. Sales of construction and architectural materials, and materials for making furniture, as well as processing and repair services
 5. Any other services associated with or related to the above

◆Affiliated Companies
PT SMB Gobel Indonesia
SMB Kenzai Vietnam Company Limited
PT Indonesia Fibreboard Industry Tbk